



# City of Taylor Police Department

500 S. Main

Taylor, Texas 76574

512.352.5551 ♦ 512.352.5119 Fax ♦ 512.365.2733 Metro ♦ [www.taylortx.gov](http://www.taylortx.gov)



## Community Meeting Agenda

May 13, 2015

Facilitator- Commander Georgens, Public Information Officer

- |   |                          |
|---|--------------------------|
| 1. Overview of Police Department, Organization, Staffing, Crime         | Police Chief Henry Fluck |
| 2. Patrol   | Sgt. Joseph Branson      |
| 3. Criminal Investigation   | Det. Aaron Koch          |
| 4. "Hide, Lock, and Take," and Neighborhood Watch (If time appropriate) | Commander Don Georgens   |
| 5. Questions and Answers  |                          |

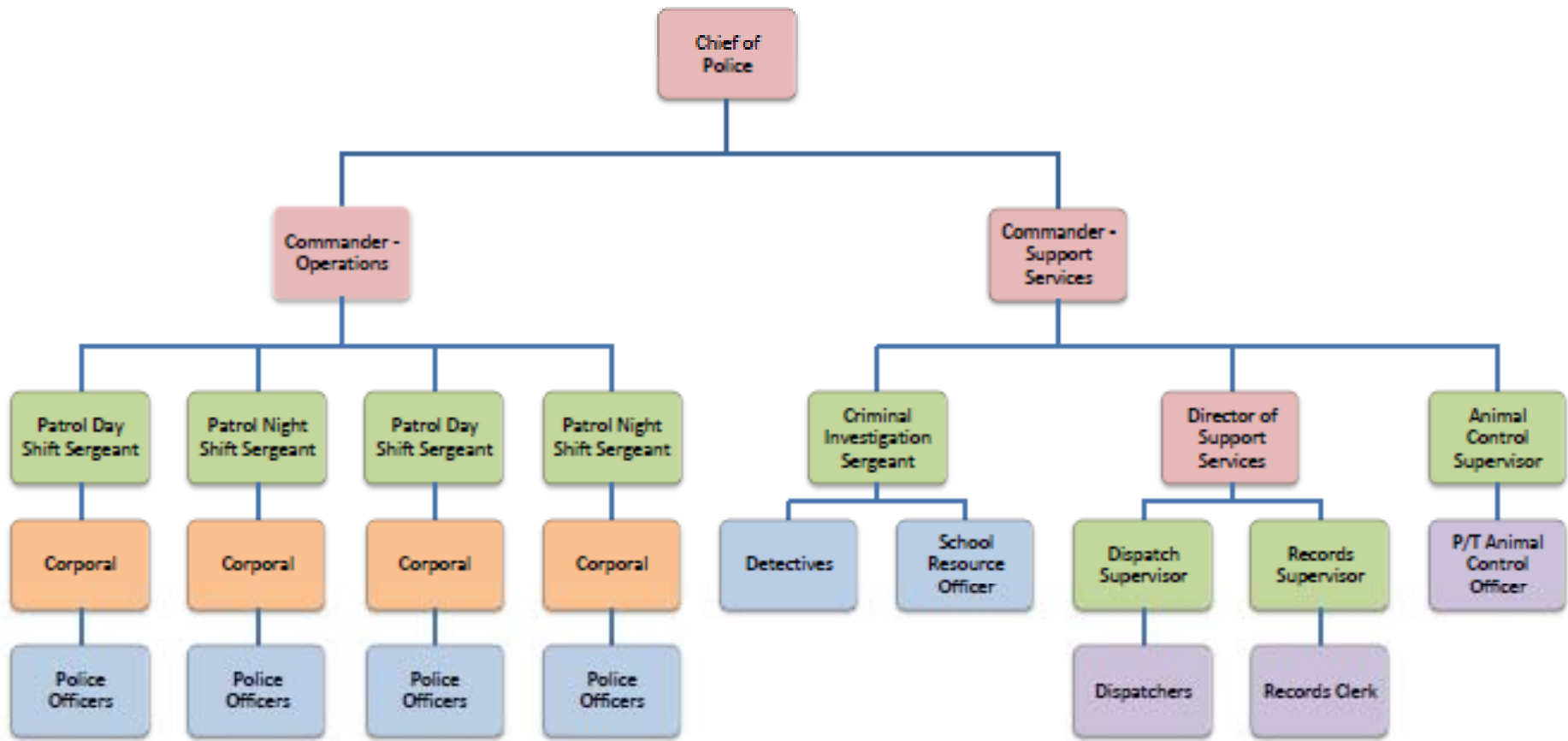
*Honesty, Integrity, Pride*

# Community Meeting

## May 13, 2015

Henry Fluck  
Chief of Police  
Taylor Police Department

**TAYLOR POLICE DEPARTMENT  
ORGANIZATIONAL CHART – EFFECTIVE JUNE 3, 2013**



- Denotes Command Staff Positions
- Denotes Sergeants/Supervisor Positions
- Denotes Current Corporal Positions
- Denotes Current Line Operational Ranks/Positions
- Denotes Current Non-sworn/Civilian Positions

# Staffing

- **Sworn Officers (Authorized) 27 (Actual) 24**
  - 1 Chief of Police
  - 2 Commanders
  - 5 Sergeants
  - 4 Corporals
  - 3 Detectives (includes 1 SRO)
  - 12 Police Officers
- **Civilian Support 8**
- **Animal Control 1**
- **Animal Control (Part time) 1**
- **Total Employees 37**

# Patrol

- The TPD is primarily a Patrol Operation
  - First Responders to calls for service.
  - Patrol Neighborhoods and Businesses during “uncommitted time.”
- 24/7, Day and Night Patrol Shifts, 4 Platoons
- Patrol Works a compressed schedule with 12 hour shifts (6-6.)
- 2 Day Shifts/2 Night Shifts.
- When fully staffed, each Patrol Shift has 5 Officers Assigned.
- Currently 3 vacancies- 1 “hard” vacancy and 2 “soft vacancies”
- 20 out of our 27 Sworn Officers (74%) assigned to Patrol

# Specialized Units

- Criminal Investigation Division (CID)- Conducts follow-up investigations of major crime
  - 1 CID Sergeant
  - 2 Detectives
  - 1 School Resource Officer (funded by TISD)-assigned juvenile cases
- Communications
  - 1 Communications Supervisor
  - 5 Communications Officers (Dispatchers)
- 1 Evidence and Records Supervisor

# 2013 Part 1 Crime

## CLEARANCE RATE

<b>Yearly Totals</b>	<b>Offenses</b>	<b>Cleared by Arrest</b>	<b>Percent</b>
Homicide	0	0	0%
Forcible Rape	1	1	100%
Robbery	8	5	63%
Assault	222	164	74%
<i>Violent crime total</i>	<i>231</i>	<i>170</i>	<i>74%</i>
Burglary	93	17	18%
Larceny	393	122	31%
Theft of Auto	7	3	43%
<i>Property crime total</i>	<i>493</i>	<i>142</i>	<i>29%</i>
<i>Total</i>	<i>726</i>	<i>314</i>	<i>43%</i>

# 2014 Part 1 Crime

## CLEARANCE RATE

<b>Yearly Totals</b>	<b>Offenses</b>	<b>Cleared by Arrest</b>	<b>Percent</b>
Homicide	0	0	0%
Forcible Rape	7	3	43%
Robbery	2	2	100%
Assault	277	178	64%
<b><i>Violent crime total</i></b>	<b>286</b>	<b>183</b>	<b>64%</b>
Burglary	176	16	9%
Larceny	266	51	19%
Theft of Auto	9	5	56%
<b><i>Property crime total</i></b>	<b>451</b>	<b>72</b>	<b>16%</b>
<b><i>Total</i></b>	<b>737</b>	<b>255</b>	<b>35%</b>



# Crime Mapping

- **Crime mapping** is used by analysts in law enforcement agencies to map, visualize, and analyze crime incident patterns.
- Crime mapping helps the public get a better idea of the crime activity in their area .
- RAIDS Online: can automatically alert the public about recent criminal activity and allows for anonymous tips to solve the crime.
- [www.raidsonline.com](http://www.raidsonline.com)
- Enter : State and City
- Enter : Dates
- Enter: Event (Crime)